

MORE FLEXIBLE THAN EVER

The new LISTA workshop trolley L3627 has been optimised for you in all of its key features and now offers you even more benefits, functions and improved ergonomics. In addition to even greater load capacities, its flexibility and adaptability make it the perfect solution for every area in the workplace. Because the basic models can be expanded to meet requirements at any time with versatile superstructures and add-ons.



- + Optimum load capacities**
Load capacity 40 kg per drawer, 400 kg housing
- + Can be utilised to the full**
since drawers can be fully extended and drawer shell heights are optimised
- + Absolutely safe to work with**
Central locking and single drawer opening protection against accidental opening when in motion
- + Flexibly adaptable**
through perforated side and rear panels for holding accessories and tool hooks
- + Extremely user-friendly**
with robust, ergonomic push handle
- + Full mobility**
thanks to the smooth-running fixed and swivel castors (two of each) in solid rubber
- + Additional storage space and work surface**
through hard-wearing wooden cover or non-slip plastic cover with compartments for small parts
- + Additional safety**
through rounded corner pieces made from ABS plastic which act as buffers
- >> Fully compatible with LISTA partition material thanks to the standardised unit of measure**
see p. 248

+ Fully modular and available in a wide range of versions

Depending on use and individual requirements, the basic models can be flexibly expanded in many ways by means of optional accessories.



Fully extendable without crossbar

- load capacity 40 kg
- enables it to be fully extended
- extremely smooth-running with great ease of movement



Partition material

- perforated, slotted drawers hold items firmly in place
- extensive range of partition material in the LISTA measurement unit see p. 248



Labelling

- handle folds upwards
- easy, clean and protected labelling



Single safety catch

- can be operated with one hand
- protects against accidental opening when in motion



Central locking

- a central locking system for all drawers
- secure and easy to use



Smooth-running castors

- two fixed castors
- two swivel castors including brake
- in solid rubber
- with generous \varnothing 100 mm



Push bar

- robust
- ergonomic
- material: anodised aluminium



Corner pieces

- protect against damage and also protect other workshop equipment or vehicles in the event of accidental contact
- material: ABS plastic
- colour: black, RAL 9005.



Wooden cover

- hard-wearing
- sanded, oiled and waxed surface
- material: Multiplex



Plastic cover

- non-slip
- including compartments for small parts
- material: ABS plastic
- colour: black, RAL 9005.



Perforated side panel

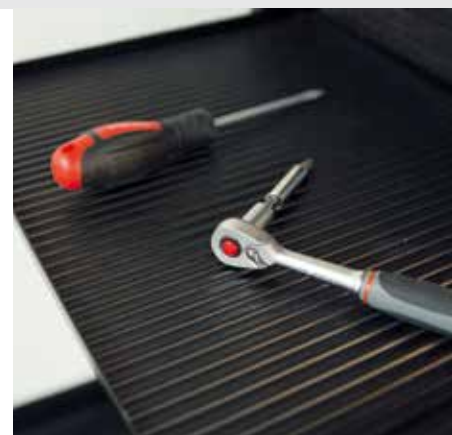
- perforated and slotted for holding accessories and keyhole hooks
- so that everyday tools are always ready to hand



Perforated rear panel

- for fixing to the rear of workshop trolleys
- perforated and slotted for holding accessories and keyhole hooks see p. 162
- ergonomic tool arrangement

Workshop trolley L3627



W → 894 mm **D** ↗ 525 mm **H** ↑ 928 mm Equipment to suit size **36 × 27 E**

 612 × 459 mm



Equipment	Number of drawers mm	Net weight kg	Art. no.
With wooden cover in Multiplex, 40 mm thick, including single safety catch on right	4: 1 × 100 / 3 × 200	74	81.060.XXX
	5: 2 × 75 / 1 × 150 / 2 × 200	78	81.061.XXX
	6: 2 × 75 / 2 × 100 / 1 × 150 / 1 × 200	83	81.062.XXX
	7: 4 × 75 / 2 × 100 / 1 × 200	88	81.063.XXX

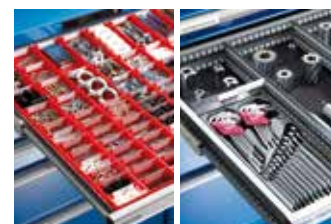


With plastic cover including single safety catch on right	4: 1 × 100 / 3 × 200	64	81.064.XXX
	5: 2 × 75 / 1 × 150 / 2 × 200	68	81.065.XXX
	6: 2 × 75 / 2 × 100 / 1 × 150 / 1 × 200	73	81.066.XXX
	7: 4 × 75 / 2 × 100 / 1 × 200	78	81.067.XXX



With plastic cover and edge protection including single safety catch on right	4: 1 × 100 / 3 × 200	66	81.068.XXX
	5: 2 × 75 / 1 × 150 / 2 × 200	70	81.069.XXX
	6: 2 × 75 / 2 × 100 / 1 × 150 / 1 × 200	75	81.070.XXX
	7: 4 × 75 / 2 × 100 / 1 × 200	80	81.071.XXX

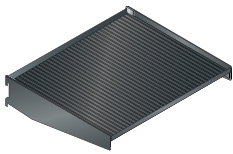
! Note: Additional equipment e.g. castors, drawer partitions or power outlets on request



» drawer partition material see p. 248



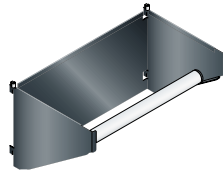
Accessories for perforated side panel



Add-on tray

Usable width mm	Usable depth mm	Art. no.
380	310	81.081.000

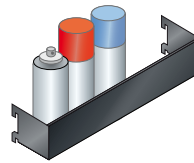
steel sheet, black, powder coated, including ribbed mat, black



Paper roll holder

for rolls Ø mm	Length mm	Art. no.
400	360	81.058.000

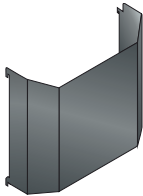
steel sheet, black, powder coated



Spray can holder

Height mm	Width mm	Depth mm	Art. no.
70	380	74	81.083.000

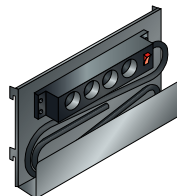
steel sheet, black, powder coated



Waste container

Content litres	Art. no.
12	81.085.000

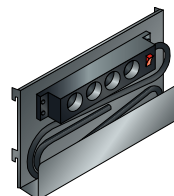
steel sheet, black, powder coated



Socket holding plate for Germany

Length in metres	Art. no.
1,5	81.086.000

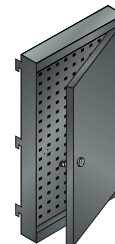
NCS S 9000-N, black. With Smart socket strip 4 × German socket, black.



Socket holding plate for Switzerland

Length in metres	Art. no.
3,0	81.087.000

NCS S 9000-N, black. With Prime-Line socket strip 4 × Swiss socket, black.

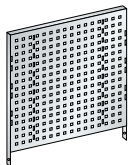


Perforated panel with door on right

Height mm	Width mm	Depth mm	Art. no.
667	380	50	81.084.000

steel sheet, black, powder coated, lockable

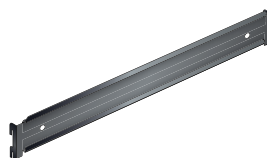
Perforated rear panel and accessories



Perforated rear panel

Height mm	Width mm	Art. no.
640	660	81.080.XXX

steel sheet, square holes 10 × 10 mm, distance between holes 38 mm



Container strip

Width mm	Art. no.
665	65.234.060

steel sheet, black, with fixing bracket, load capacity 15 kg, for holding storage containers sizes: 2, 3 and 4 colour: Black



» For keyhole hooks and storage containers see p. 162

